



Wanstead High School Sixth Form

Education with Character



Prospectus



Welcome to Wanstead High School

Thank you for showing an interest in this amazing local school. Wanstead High School is a thriving 11-18 comprehensive school in the heart of the community. Our mission is to deliver high quality education with character to every single young person who comes here. Our staff are totally committed to doing the best for pupils and, in return, pupils are keen to succeed, resulting in excellent exam results and other personal milestones such as trips abroad, performances and many career opportunities.

It is always rewarding to see our post-16 pupils having an impact on the wider school by taking part in the social contract, performing in assemblies or acting in a school play.

The key to successful post-16 education is to offer a broad and balanced curriculum, consistently taught well by subject specialists, that allows all pupils to follow the most ambitious pathways to suit their talents and dreams. That's what Wanstead High School does so well! We are also equipping our pupils with enquiring minds and instilling strong positive values that will help them to thrive and succeed in the future.

We provide a very strong core of traditional subjects at A Level, as well as a huge breadth of additional choice, including the opportunity to follow Media, Classics, Dance and Photography, with amazing facilities across the school, including well-equipped science labs and sports facilities. The Dance, Music and Drama provision is second to none and the regular performances are outstanding in every way. In addition to learning in the classroom, our pupils also have access to a wide spectrum of extra-curricular activities from excellent sports and school clubs, through to trips, including opportunities to travel abroad.

The Sixth Form has a purpose-built building which provides space for independent and supervised study which is a great asset. We are also hugely excited about the new building and swimming pool which should be open in 2025 but, sadly may be a little late for this cohort.

We are committed to providing the very best for the young people in our care, and I hope that this prospectus opens up a little bit about what makes Wanstead special. Although relatively new to the school, I am already very proud to be the Headteacher. I have a teenage daughter myself and she drives me to ensure that the education we provide is second to none – it won't be long before she is making her choices about post-16 education. I want every opportunity for her and I want every opportunity for your children too. Please do take the opportunity to visit the school – our pupils and staff are the very best advertisement for Wanstead High. I look forward to meeting you.

Emma Hillman - Headteacher



At Wanstead High, we aim to raise expectations and ensure that each and every pupil in our care achieves highly and leaves school well-educated and qualified.

We want every pupil in the school to be successful, and this means that they should be working towards achieving or exceeding attainment targets. Not everyone can achieve the same academic standard, but all pupils can give their best, accept challenge and do what we ask of them. In this respect, a condition of being part of the Sixth Form is that pupils maintain excellent records of attendance and complete all assignments, homework, assessments and tasks on time and to the best of their ability.

The Wanstead High School Sixth Form dress code encourages our pupils to develop maturity and a business-like approach to their studies. We expect a rigorous adherence to the dress code in the same way we expect the highest standards with respect to learning both inside and outside the classroom.

Aspiring for Excellence

Our Vision:

We will provide high quality education with character: inspiring our young people, keeping them safe, and preparing them fully for life in the modern world.

"Pupils and staff are proud of the school and what it offers. The importance the school attaches to pupils' spiritual, moral, social and cultural development is very evident in the care and concern shown for individual development and welfare. Pupils are well-supported at all stages of their education. They develop into mature and confident young people who have positive attitudes towards learning and want to do well". Ofsted 2019

Standards and Expectations





“The private study area is extremely useful in my studies; having a silent place to catch up on course content and homework”.
Year 13 Pupil 2023

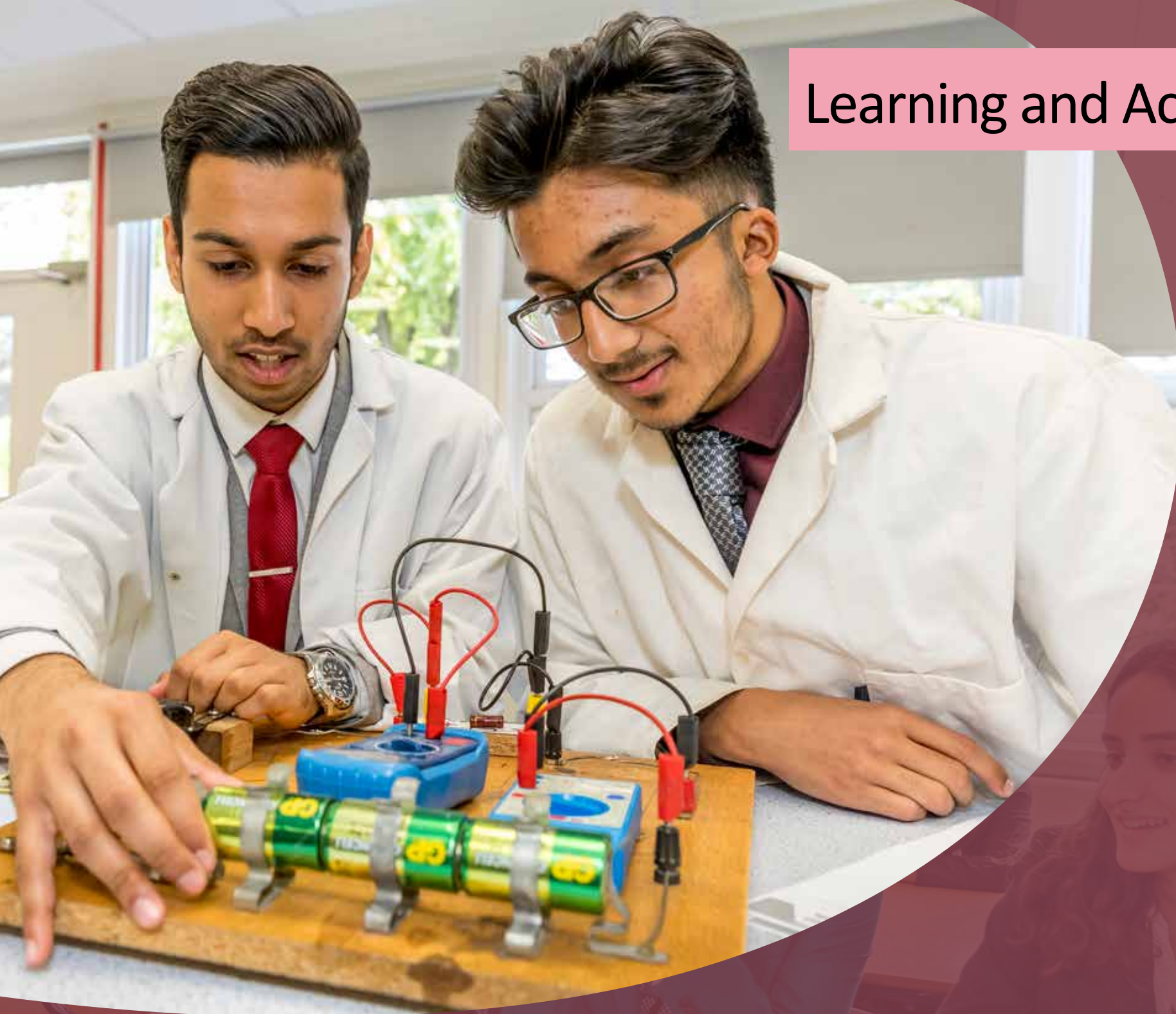
“The teachers have a very effective method of teaching that has helped me a lot”.
Year 12 Pupil 2023

Our teachers work in partnership with our pupils to ensure they achieve their full potential.

All Sixth Form pupils will be expected to be committed to their studies and be prepared to take responsibility for much of their learning outside of the classroom, supported by their personal tutor and subject teachers. This develops the skills that pupils need to make excellent progress and prepares them for progression to further or higher education and into their chosen career. Pupils have periods dedicated to independent and supervised study and can earn the right to home study over the two years.

“Teachers’ strong subject knowledge underpins good planning of work. This enables them to provide interesting activities, which engage pupils and motivate them to want to do well”.
Ofsted 2019

Learning and Achievement



Subjects and Curriculum



Our Sixth Form offers all of the facilitating subjects as defined by the Russell Group universities. We also offer a broad curriculum and a wide range of A Level subjects designed to meet the needs of a broad spectrum of pupils. Information on our programmes of study and entry requirements are given in our course options brochure.

There are a number of important decisions to be made before making your final subject choices. When trying to decide, think about the abilities and skills the course demands and whether you will find the subject interesting.

Do you need the subject in order to follow a chosen career path or university course? How well are you doing in Year 11? Are you reaching your potential? Your GCSE results and the point score calculated from them heavily influences which courses will be open to you.

We expect you to commit to fulfilling your true potential and in return you can expect from us subject expertise delivered in an innovative and exciting way, together with a strong pastoral support programme to help and guide you through the Sixth Form and beyond.

We can offer you a wide-ranging enrichment programme to broaden your experience and guidance, and support as you choose university courses and consider your career choices. We believe that academic monitoring and tracking is vital to ensure steady and impressive progress and we will show a dedication to ensuring you reach your goals.

“Relationships between teachers and pupils is excellent. This encourages pupils to behave well and have very positive attitudes to learning. Pupils receive good individual support”. **Ofsted**

“The education I receive at Wanstead High School Sixth Form is excellent. The teachers are outstanding; their attentiveness to the well-being of their students is something that is very difficult to find anywhere else. They really care”.

“Wanstead High School is the door to high achievements, high success and high excellency”.

Year 12 Pupils 2023



“There are great opportunities to become involved in the running of the school as an ambassador or a leadership representative. This develops pride and responsibility for our school”.
Year 13 Pupil 2022

We offer a wide range of traditional subjects, as well as a variety of other interesting courses such as Classics, Media, Sociology, Dance and Photography. In the Arts, many former pupils move on to study related courses at university and other higher education institutions. Pupils can learn a musical instrument, join drama, dance and music groups or use music practise rooms. There is a broad mix of musical ensembles in the school including an orchestra, jazz band and choir. Whole school productions take place throughout the year, including at least one drama production, a number of music concerts and performing arts celebration evenings.

Curriculum enrichment broadens and deepens pupils’ experience in the Sixth Form. Regular study visits are arranged by most departments from Art trips to Geography fieldwork and opportunities to go abroad. This year, there is a trip planned to Paris, Rome and Malaga. Drama pupils are regular attenders at top-class theatrical productions in the West End.

All pupils follow a social contract that means they volunteer in the school to support the wider community.

“The range of sixth form study programmes matches pupils’ academic needs, and the wide range of enrichment and extra-curricular activities promotes good personal development”.
Ofsted 2019



Enrichment and Creativity



Support and Guidance





“Unifrog has helped me so much to consider different options and will help me make the right choices”.

Year 12 Pupil 2022

“As an early applicant, I felt so supported by my Head of Year and the pastoral team when applying through UCAS. I was lucky enough to have multiple workshops and sessions to tweak my personal statement so that I feel truly confident sending it off!”.

Year 13 Pupil 2022

The Sixth Form team are accessible to pupils on a daily basis in the Sixth Form centre, their key role being to ensure that all pupils receive the support and guidance they need to achieve their best.

Sixth Form pupils are arranged into tutor groups with a form tutor who plays a key role in making sure each pupil is able to meet our agreed standards and expectations. Tutors meet pupils regularly to review progress and set targets which will enable you reflection on learning and ensuring pupils achieve their full potential.

Our UCAS advisor can offer expert help and guidance about future study and university choices in order to help you pursue a future that offers challenge, stimulation and economic security in an increasingly competitive world. All pupils have access to Unifrog – an online programme that helps pupils to make the best choices about next steps, submit the strongest applications and take part in Work Experience in Year 12.

In essence, there is always someone to provide guidance to both parents and pupils and a helping hand when needed to ensure pupils achieve their best.

“Good careers advice and guidance help pupils to make informed and sensible choices about their future study and employment”. Ofsted.





“The Sixth Form provides us with great guidance and supportive actions to ensure our success”.
Year 13 Pupil 2023

“Throughout my year and a half at this sixth form, not only have I felt at home by the welcoming team, but also supported through my UCAS and Oxbridge preparation”.
Year 13 Pupil 2023

With such a wide choice of subjects offered it is important to take time to choose the right subjects in the Sixth Form and consider what you enjoy and where you thrive. This is vital as well-motivated pupils do best at A Level. Some university courses require pupils to have studied certain subjects at A Level, others are more flexible. Research is key, as choosing the wrong subjects at A Level may mean you are unable to apply for some university courses.

It is also worth noting that if you are hoping for Russell Group university entry there is a published list of subjects that they call “Facilitating Subjects” (Maths and Further Maths; Physics; Biology; Chemistry; History; Geography; Modern Languages and English Literature) – these are subjects that should enable access to the broadest range of degrees at these universities so long as at least two of them are being studied through to Year 13. There are also other subjects regarded as useful by the Russell Group depending on the course applied for.

Once subjects have been chosen, applications will need to be submitted as per the guidance for that year. This includes an academic reference from the current school to verify that the application details support the application and the suitability of chosen subjects. Once this has been processed and the course has been deemed appropriate, we will invite pupils to a meeting to discuss their application. Letters will then be issued informing you whether you have been offered a conditional place, subject to your GCSE results.

In 2023, 42% of our pupils attending higher education went to a Russell Group university.

“The curriculum enables pupils to achieve the qualifications they need to move on to the next stage of education, training or employment. Pupils have the opportunity to take part in extra-curricular clubs over the year, which enhance their learning and their personal development”.
Ofsted 2109

“I'm contacting you firstly to express how grateful we are to Wanstead School for helping my child get into Oxford - we really appreciate the commitment of teachers and WHS staff”. **Parent 2022**

Making choices for success





“The Sixth Form has a welcoming environment that makes it easy to settle in and feel comfortable”.
Year 12 Pupil 2023

Our purpose-built Sixth Form centre offers excellent facilities. It includes a large supervised quiet study room complete with a computer suite and canteen and common room (which operates as an 'open study' room during lesson times) all of which are available for the exclusive use of our sixth form pupils.

The School Library is used by sixth form pupils for research, study and wider reading. It has a comprehensive range of reading material for all subjects, PCs and laptops and a dedicated fulltime librarian on hand for advice.

“The school’s promotion of pupils’ spiritual, moral, social and cultural development is strong. Pupils are consulted and their views are valued. The school’s inclusive approach fosters respect and excellent relationships between adults and pupils”. **Ofsted 2019**

Facilities





Wanstead High School

Education with Character

Redbridge Lane West, Wanstead, London E11 2JZ

Tel: 020 8989 2791

Email: whs@wansteadhigh.co.uk

www.wansteadhigh.co.uk